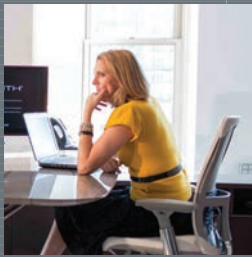
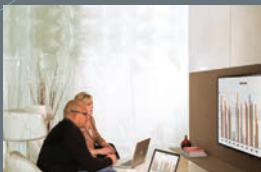
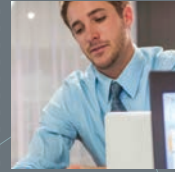
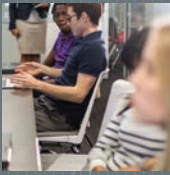


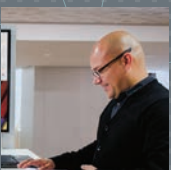
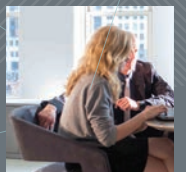
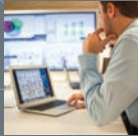
# :: workware™

Connect



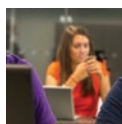
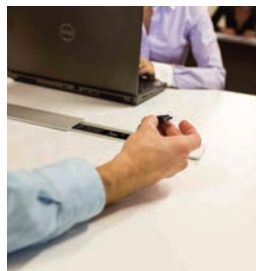


WORK CONFIDENTLY  
DIGITALLY  
SEAMLESSLY  
COLLABORATIVELY  
INTUITIVELY  
SMOOTHLY  
ELEGANTLY  
SECURELY  
ANYWHERE  
TOGETHER





# CONNECT AND SHARE AT THE PACE OF IDEAS



## Now You're Flowing

An uninterrupted exchange of information is essential for communication and creative problem solving in groups. That's just what workware connect was designed to bring to the workplace.

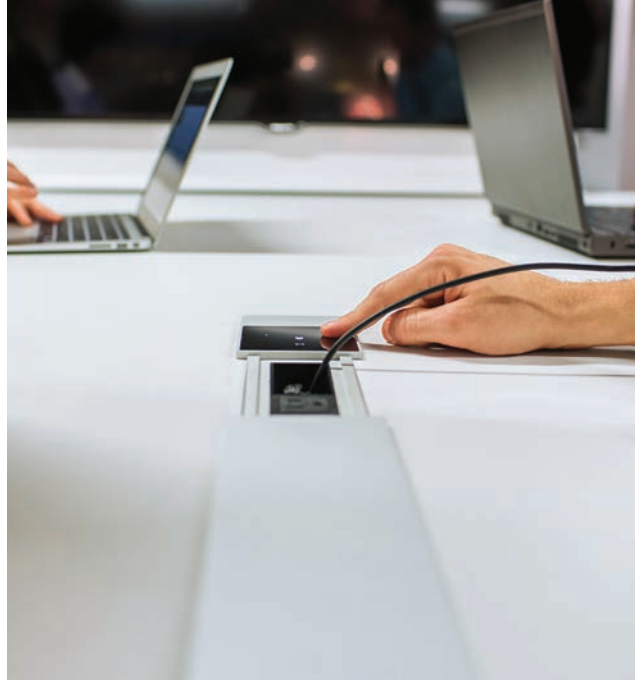
With options for wireless or wired connectivity, workware removes technological barriers that often hinder collaboration at work. Users simply plug in or launch software on their laptop to connect wirelessly to external video displays. It's that easy for groups to connect, share content, and keep ideas flowing.





WORK IS AN ACTIVITY, NOT A PLACE. INCREASINGLY, IT'S A GROUP ACTIVITY: SHARING PROGRESS, TOUCHING BASE, COMPARING NOTES, CONSIDERING MULTIPLE POINTS OF VIEW. WITH WORKWARE, THESE ACTIVITIES GET EASIER FOR EVERYONE.

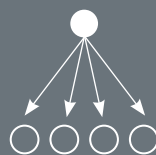




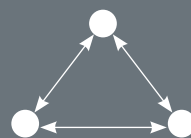
### Up and Running and Down to Business

Simple, secure connections with wired or wireless options configure automatically to most laptops and monitors — single or dual. Control can switch from one participant to the next with a simple touch for wired users, or a click for wireless. Quad view allows up to four wireless users to share content simultaneously on one display. Ongoing support and software updates from Haworth ensure that all workware connect options are virtually future-proof.

#### SHARE



#### CONNECT



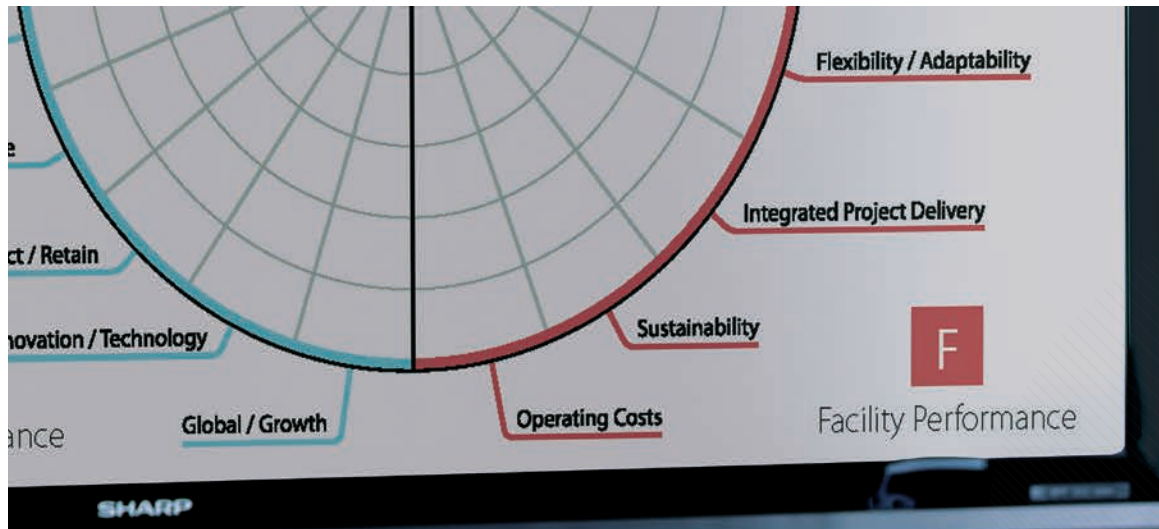
#### COMPARE



#### SWITCH











### Designed to Fit – Anywhere

When coworkers get together to get work done, ideas need to take center stage — not communication tools. That was the thought behind the Haworth Design Studio's discrete, low-profile design for the workware connect module. The elegant sliding door and multiple finish options ensure a clean, crisp aesthetic wherever workware is used: tactical execution, presentation, social, and strategic thinking spaces.

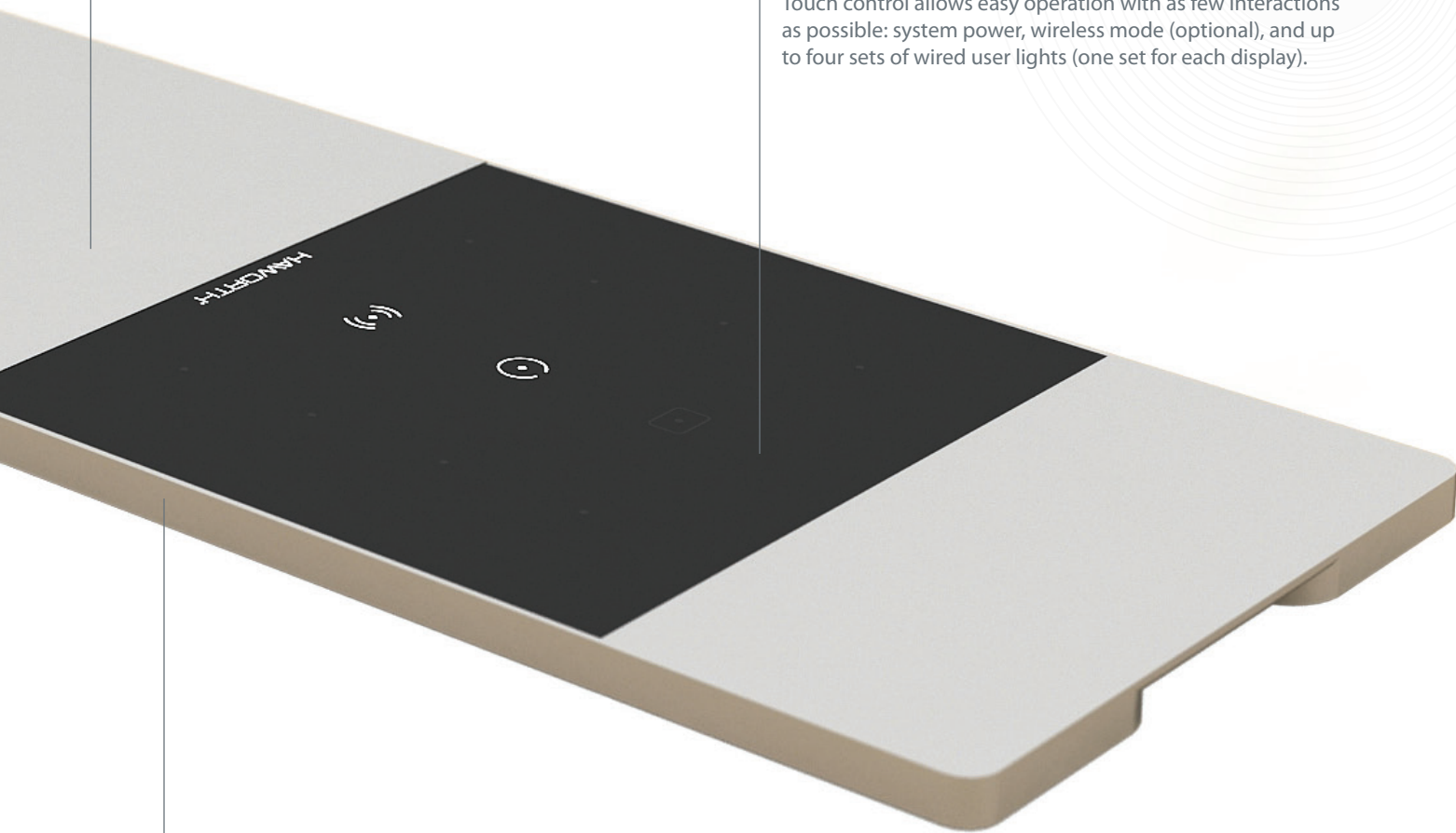


## BYOT (BRING YOUR OWN TABLE)

All configurations are available in two sizes — wide or narrow (shown) — to allow easy retrofitting into existing furniture applications. This modular approach also makes future upgrades a snap.

## TOUCH AND GO

Touch control allows easy operation with as few interactions as possible: system power, wireless mode (optional), and up to four sets of wired user lights (one set for each display).



## FINISHES



ANODIZED



CHARCOAL



GRAPHITE



HIGH GLOSS  
WHITE

## WORRY-FREE WIRELESS

Wireless security is important to everyone. With workware, wireless connectivity is built upon your existing network infrastructure, taking advantage of your existing firewalls and other security features. Additionally, each session generates a unique 4-digit login code and remote users are limited to presenter access to guard against eavesdropping.



## Connectivity Options

At Haworth, we understand that nothing about work today is one size fits all. So workware connect provides scalable options for connecting and sharing.



### Cable Sharing

Content sharers pass a cable from one user to the next.



### Wireless Sharing

An unlimited number of users can share content using on-screen control.



### Cable Sharing with Touch Control

Up to four users pass control by touching a button. No cable passing needed.



### Wireless Sharing with Wired Cable Back-up

Combines wireless sharing with wired back-up.

## Show and View

Haworth's workware product line also includes workware view monitor mounts. With options available for table- or wall mounted (on drywall or Enclose® moveable walls) displays, workware view accommodates various sizes and brands of monitors in single or dual setups.

### Wall Mount



(Available for drywall or Enclose moveable walls)

### Table Mount



# HAWORTH®

For more information call 800.344.2600 or 616.393.3000.  
Download additional copies at [haworth.com](http://haworth.com)

This brochure is printed on FSC® certified U2:XG™ paper, manufactured with electricity in the form of renewable energy (wind, hydro, biogas) and contains a minimum of 30% post-consumer recovered fiber. FSC is a global benchmark for responsible forest management.



Haworth is a registered trademark of Haworth, Inc.  
Printed in USA ©Haworth, Inc 2013 01.13  
[Haworth.com](http://Haworth.com) | [Haworth-Europe.com](http://Haworth-Europe.com) | [Haworth-Asia.com](http://Haworth-Asia.com)