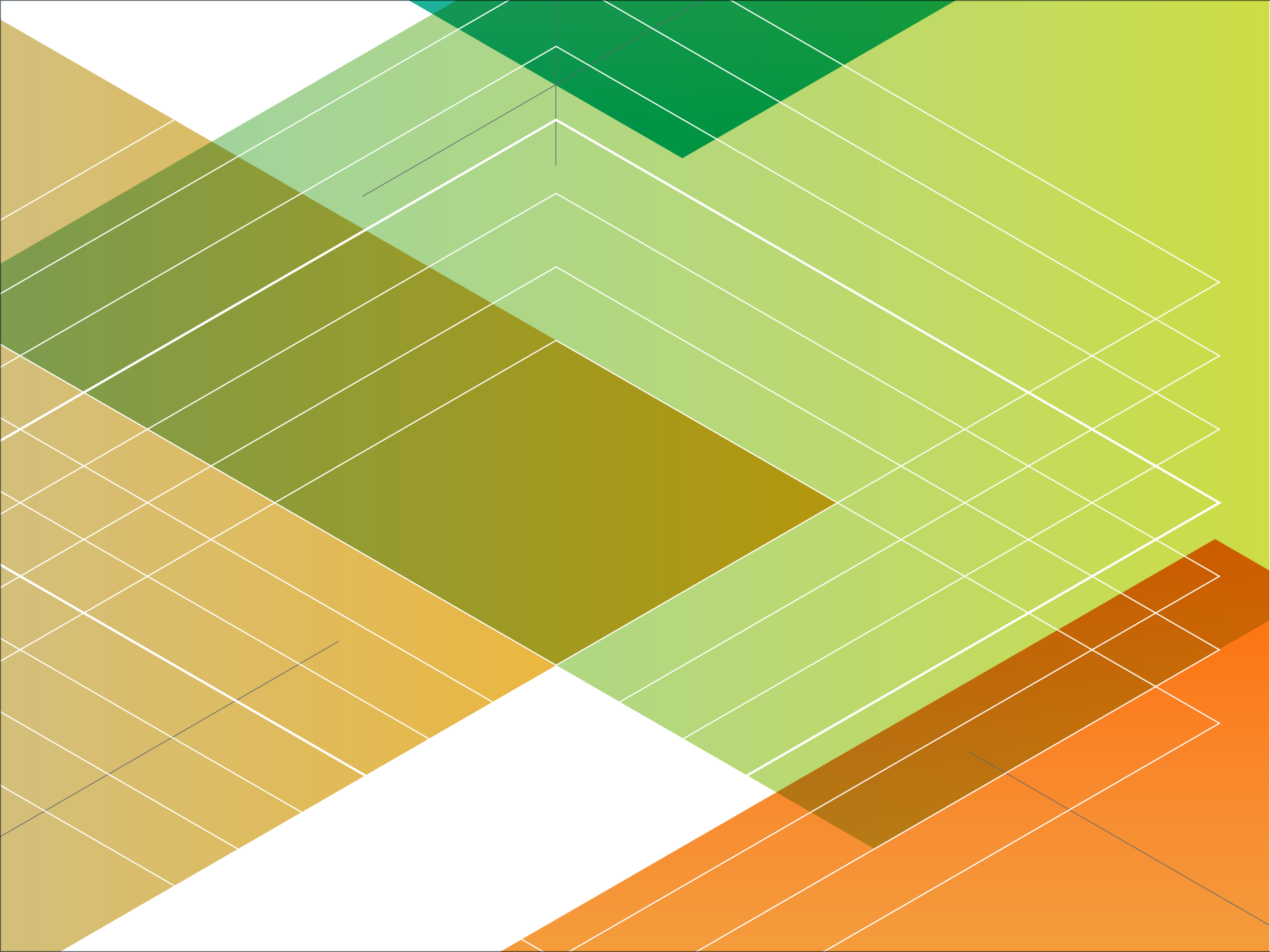




LAYERS OF ORGANIC WORKSPACES®

HAWORTH®



We understand that external influences—social, technological, economic, environmental, and political—shape your organization’s vision for the future. As your business drivers change, your space should evolve as well. We can help you connect your space with your organizational objectives, and transform it into a responsive and adaptable environment.

Our Organic Workspace, a portfolio of products, is the solution that flexes with your needs now and in the future. Let us show you how. From the flooring to the furniture—everything works together, on every layer.

Design Perspective

As your organization changes, your floorplate needs to respond. Staying nimble while keeping up with advancements in technology and changing workstyles lets you get back to business quickly and economically when you need to transform your space.

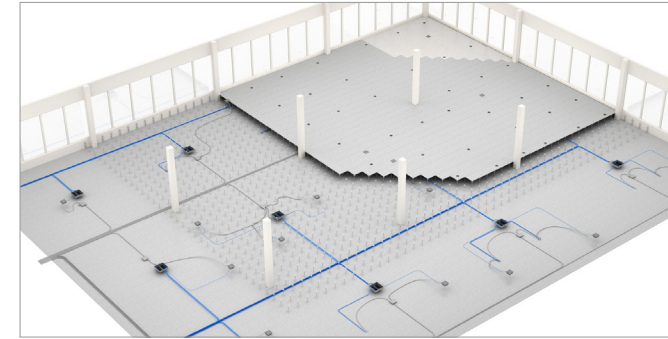
Our raised access floors provide a strong foundation for flexibility of reconfiguration. Coupled with our architectural elements and freestanding furniture, you have endless solutions for your current space and future layouts.

Only Haworth combines global knowledge and research with design integration to create highly sustainable, Organic Workspaces. Our design teams honor discreet levels of integration throughout our product development process. This purposeful approach allows our many product solutions to be great alone, yet effortlessly work together, ensuring holistic environments can be created and endlessly adapt as needs change.



An Adaptable Utilities Platform

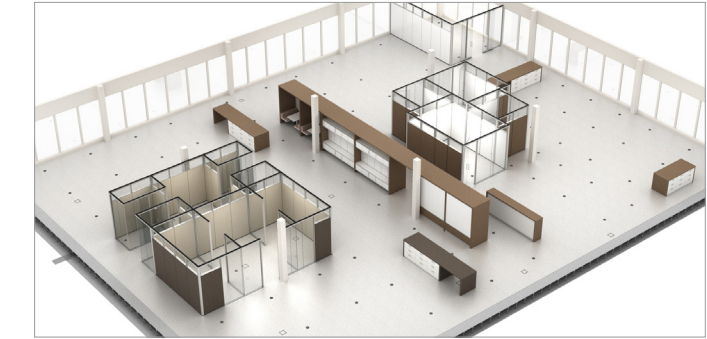
Modular power, voice, and data introduce flexibility at the very beginning. Plug-and-play components snap together without tools for swift installation and efficient reconfiguration. From the floors to the furniture and moveable walls, Haworth utilities seamlessly integrate to support even the most challenging requirements.



Raised Access Floors

Solid and quiet, TecCrete® access floors are ideal for a wide range of environments, including computer rooms. TecCrete installs quickly and easily above the underfloor power, voice, and data system—keeping utilities within easy reach to support your organization's changing needs.

Elevate sustainability and efficiency even further by incorporating HVAC under the floor. Swirl diffusers place climate control at users' fingertips.



Adaptable Architecture

Divide, contain, or enclose space with modular architecture designed to meet a wide array of interior needs. 100% reconfigurable, Haworth moveable walls and our Patterns™ architectural system provide a sense of permanence that's more cost effective and sustainable than conventional construction or millwork. And whether your organization is growing, changing or moving, your space can readily adapt to evolving needs with minimal expense, waste, disruption, and downtime.



Freestanding Furniture

Effortlessly blend floors, walls, systems, and furniture throughout the space. From shared surface materials and components to physical connections and compatible dimensioning, you'll find that Haworth products offer unsurpassed integration. Creating unified environments while minimizing assets has never been so thoughtfully simple.



Color Shift

Portray your brand. Honor the budget. Reflect the culture. Whatever your goals, consider the powerful effect of coordinated fabrics, finishes, laminates, wood, and glass applied throughout the environment.

Whether bringing views to occupants, equality to space, or daylight to the building core, a wide selection of surface materials offered across Haworth product lines expands your possibilities.



Reconfigure and Reuse

Embrace moves, adds, and changes. Haworth solutions help you manage assets, leverage your investment, and adapt easily to your organization's needs. Supported by our highly adaptable flooring products, our integrated solutions allow space to be reconfigured efficiently and effectively—reusing more than 75% of the assets and reducing overall cost of ownership. Only Haworth can provide this level of integration for a fully adaptable, exceedingly sustainable environment.

Workstyles

Organizations juggle many workplace needs. One issue that many of our customers face is accommodating the variety of workstyles that make up their workforce. Through our research around people's work behaviors, we developed four workstyle categories: Connector, Master, Crew, and Specialist. Each one has key differentiating characteristics to help organizations make appropriate choices in workplace design that best support workers.

Connector – Identifies people who often work in groups to generate new ideas and connect them to strategy

Examples: managers, strategists, consultants, and people who work on design or product development teams

Master – Identifies subject matter experts who primarily work alone to develop and hone strategic concepts

Examples: visionaries, researchers, writers, and engineers

Crew – Identifies individuals who work in teams focused on tactical objectives and deliverables

Examples: traders, web developers, various marketing teams, and online sales teams

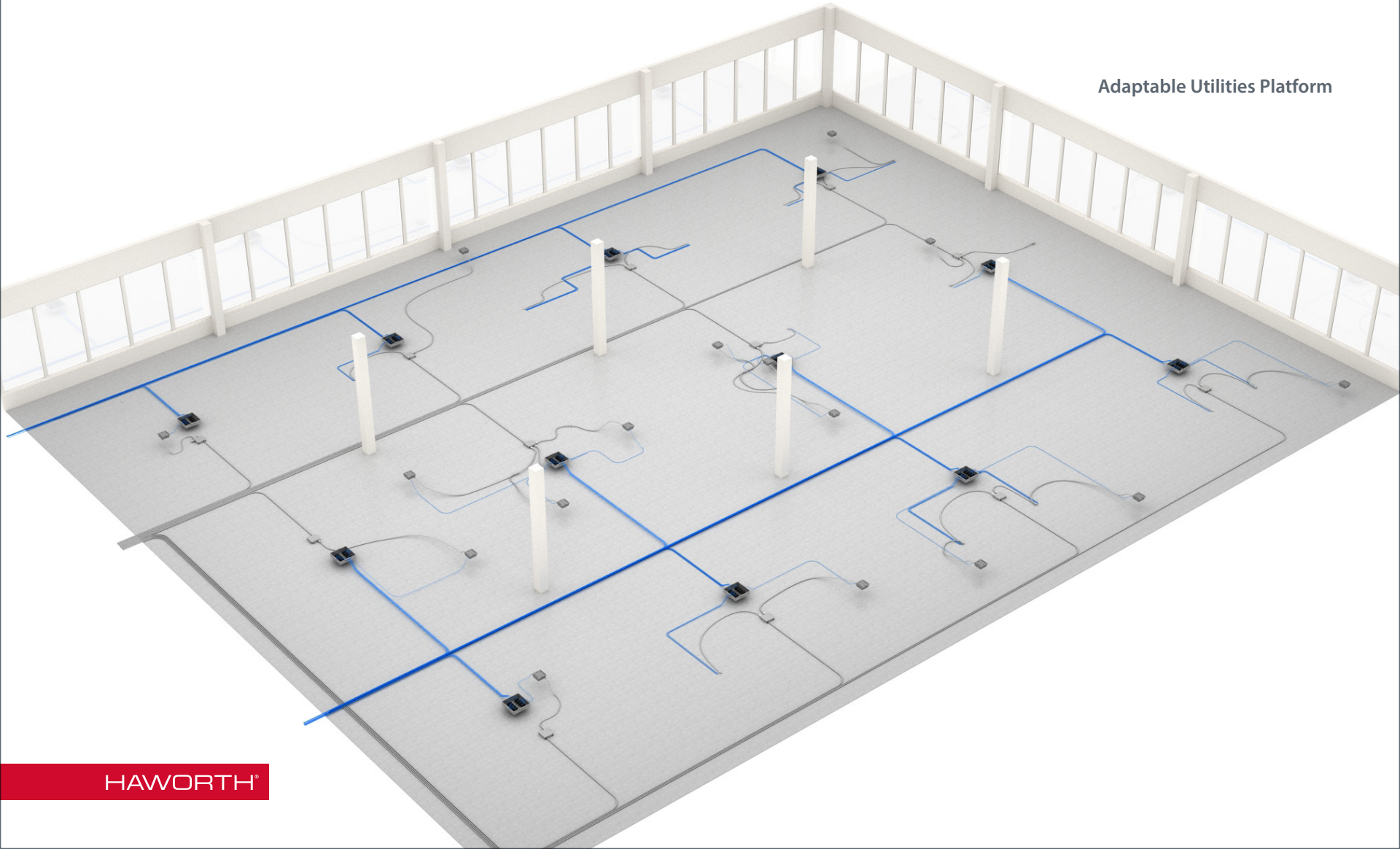
Specialist – Identifies people who mostly work alone focused on specific tasks and deliverables

Examples: accounting functions, technicians, administrative roles, and code writers

Workstyles reflect the diversity of how people work within organizations, affected by both what is expected of them and how they prefer to perform their job. Organic Workspaces provide the opportunity to align workspaces with workstyles in a way that is sensible, manageable, and scalable, in order to optimize workplace performance.

Layers of Organic Workspaces®

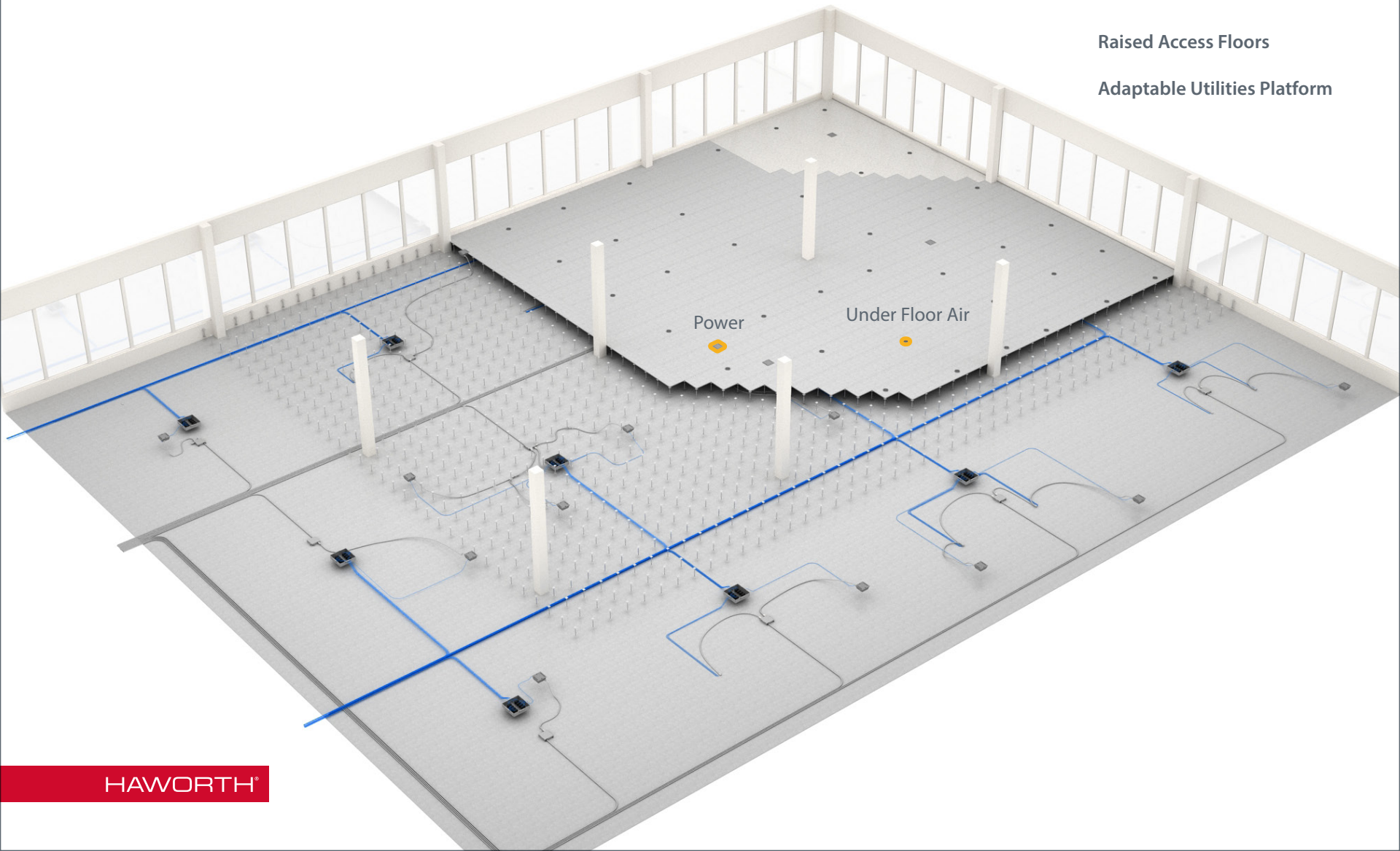
Adaptable Utilities Platform



Layers of Organic Workspaces®

Raised Access Floors

Adaptable Utilities Platform

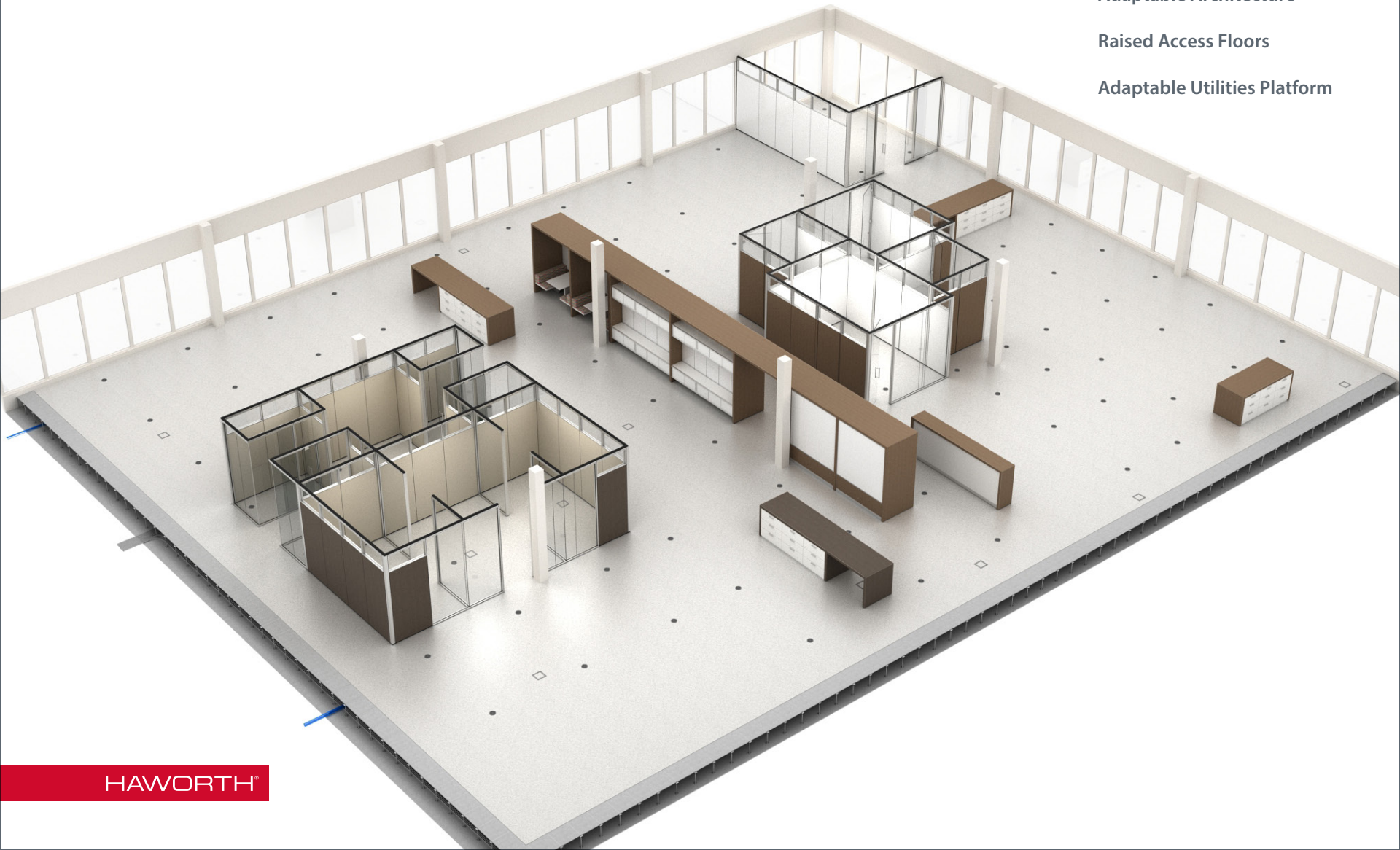


Layers of Organic Workspaces®

Adaptable Architecture

Raised Access Floors

Adaptable Utilities Platform



Layers of Organic Workspaces®

Freestanding Furniture

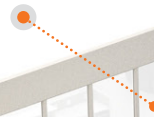
Adaptable Architecture

Raised Access Floors

Adaptable Utilities Platform

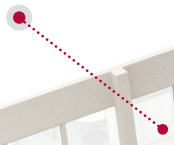
Crew

Identifies individuals who work in teams focused on tactical objectives and deliverables.



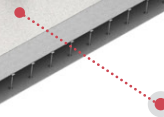
Master

Identifies subject matter experts who primarily work alone to develop and hone strategic concepts.



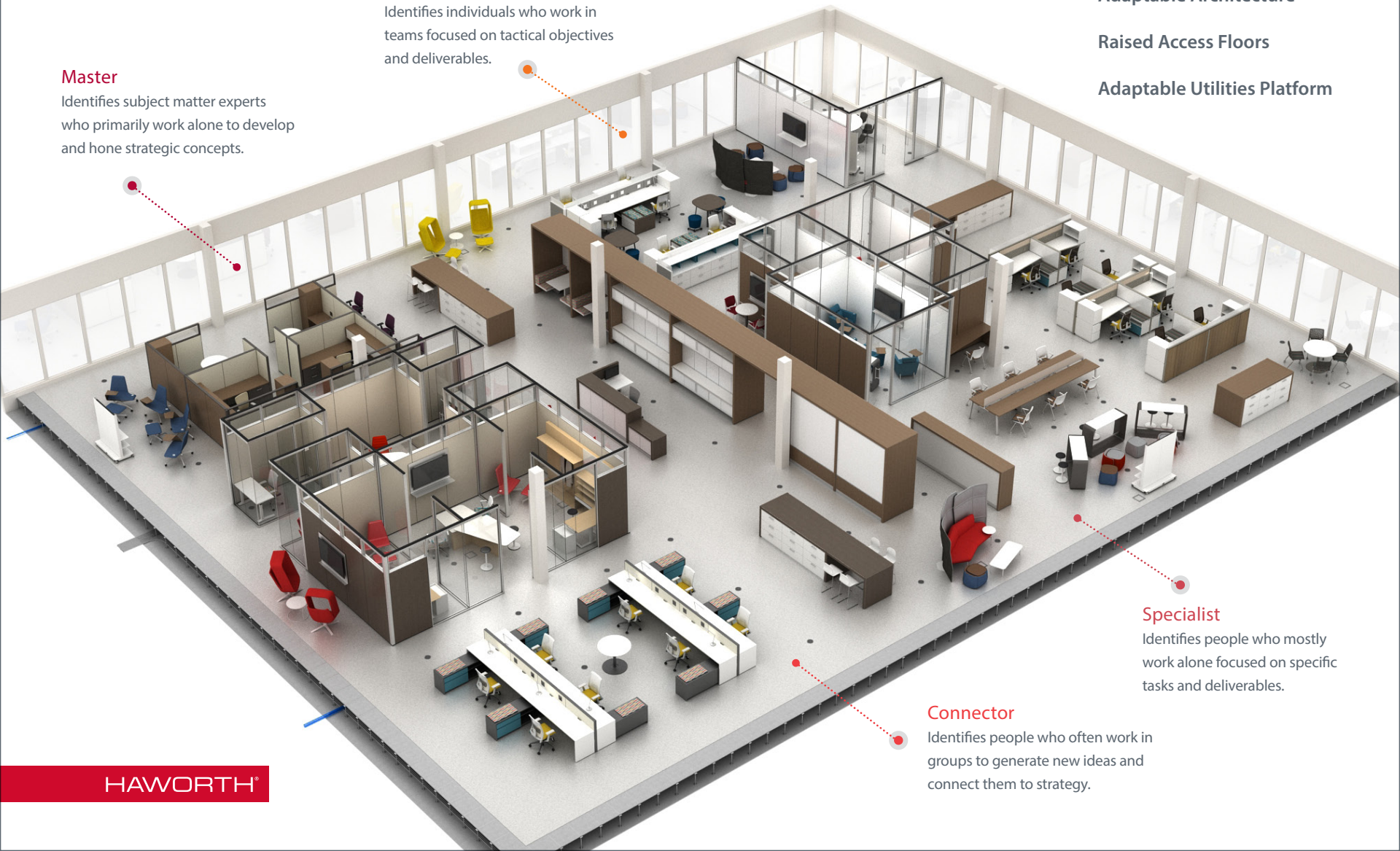
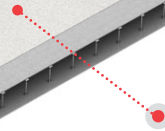
Specialist

Identifies people who mostly work alone focused on specific tasks and deliverables.



Connector

Identifies people who often work in groups to generate new ideas and connect them to strategy.



Layers of Organic Workspaces®

Color Shift

Freestanding Furniture

Adaptable Architecture

Raised Access Floors

Adaptable Utilities Platform

Crew

Identifies individuals who work in teams focused on tactical objectives and deliverables.

Master

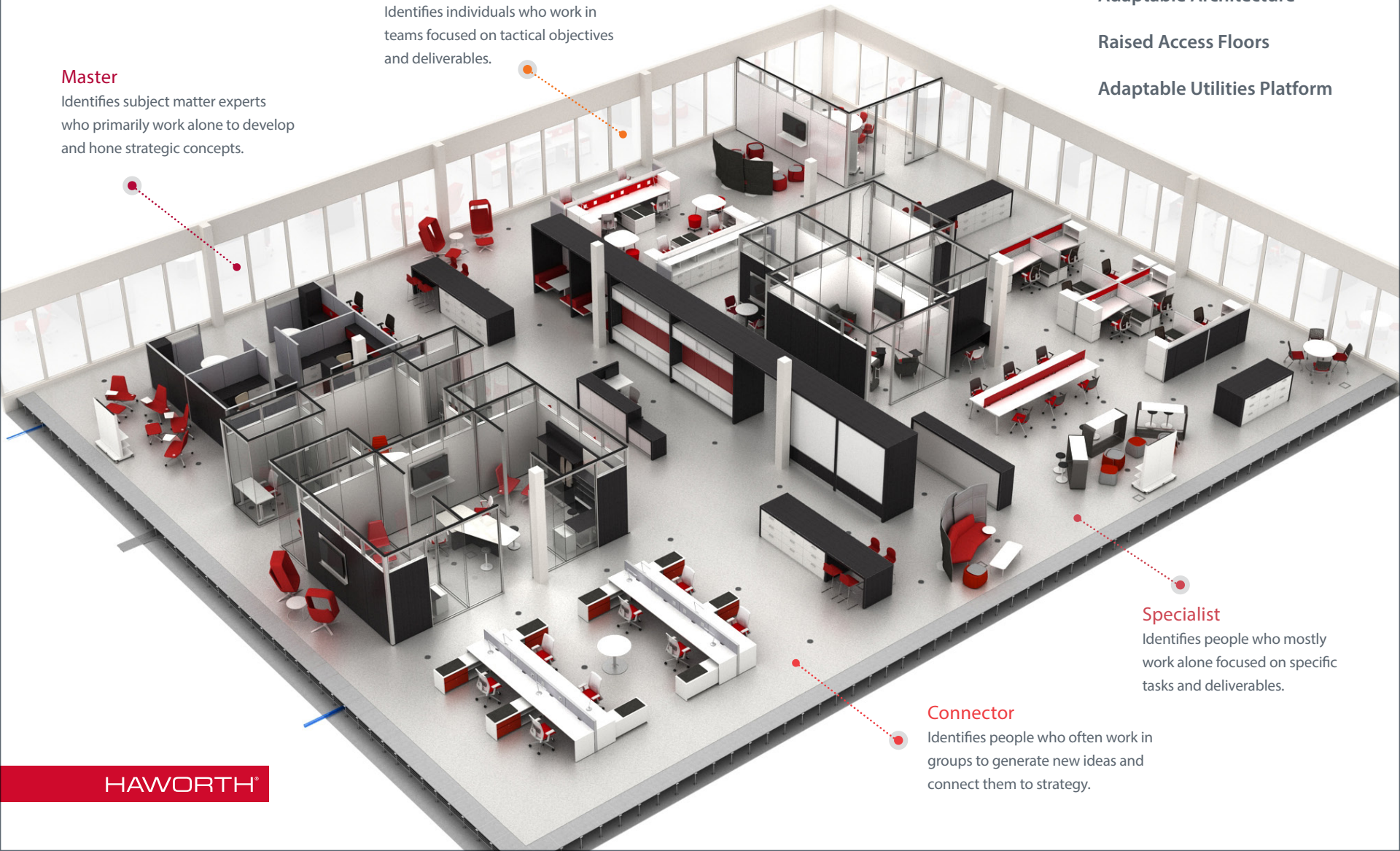
Identifies subject matter experts who primarily work alone to develop and hone strategic concepts.

Specialist

Identifies people who mostly work alone focused on specific tasks and deliverables.

Connector

Identifies people who often work in groups to generate new ideas and connect them to strategy.



Layers of Organic Workspaces®

Shift of Freestanding Furniture in Floorplan

Reconfigure & Reuse > 75% of the Assets

Reconfiguration of Adaptable Architecture

Relocation of Power and Air

HAWORTH®

